

Adding a Trend Chart to a Table

Last Modified on 01/29/2025 4:46 pm EST

Overview

A Trend Chart can be added to a Grouped Table. Trend Charts analyze trends and changes in Data over a period and define peaks and valleys in the Data.

User Account Requirements

The user account you use to log into Resolver must have Administrator permission to add a Trend Chart to a Table.

Related Information/Setup

To add styles to your Chart, please see the link below:

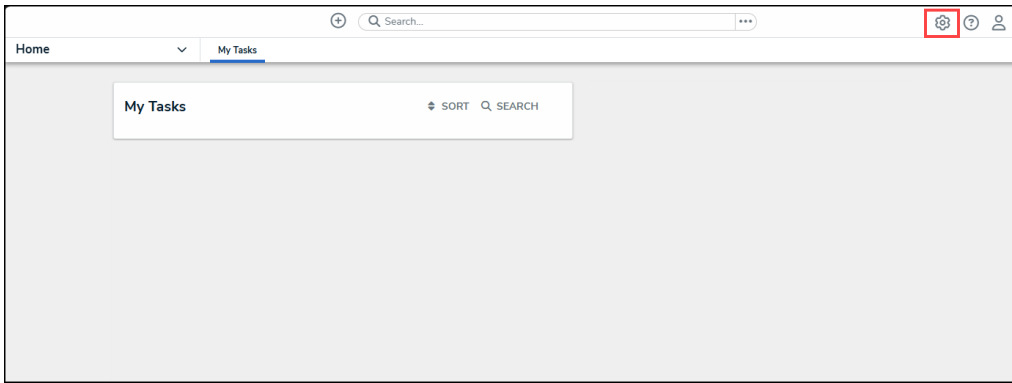
- [Adding Styles to a Chart](#)

Please see the corresponding articles below for Information on Adding a Chart Type not covered by these instructions.

- [Adding a Chart to a Dashboard](#)
 - [Adding a Multi-Series Chart to a Dashboard](#)
 - [Adding a Combo Chart to a Dashboard](#)
 - [Adding a Table to a Dashboard](#)
 - [Adding a Crosstab to a Dashboard](#)
 - [Adding a Heatmap to a Dashboard](#)
 - [Adding a Map to a Dashboard](#)
 - [Adding a Box and Whiskers Chart to a Dashboard](#)
-

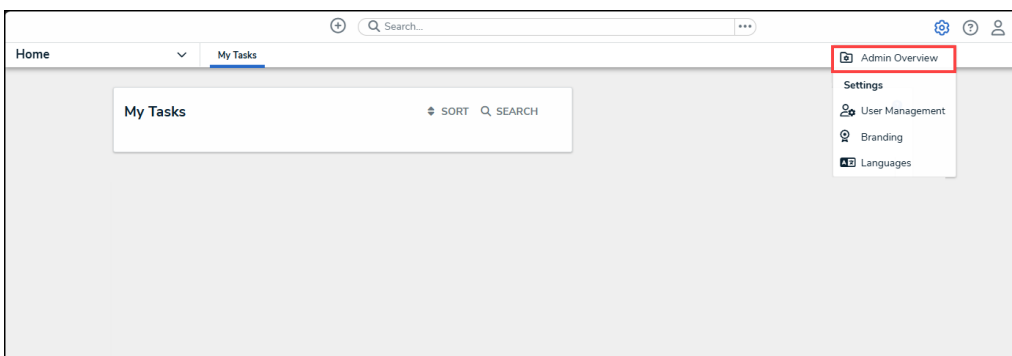
Navigation

1. From the **Home** screen, click the **Administration** icon.



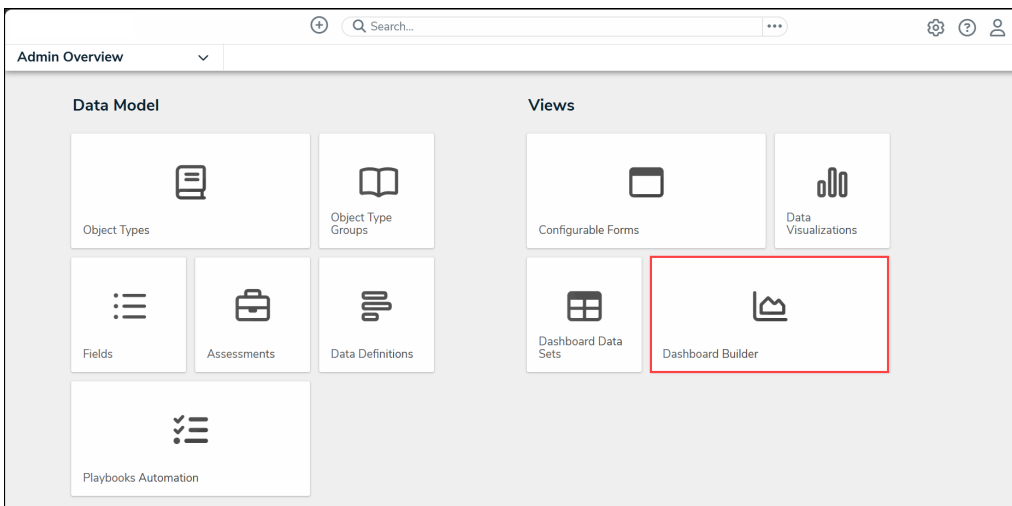
Administration Icon

2. From the **Administrator Settings** menu, click the **Admin Overview** link.



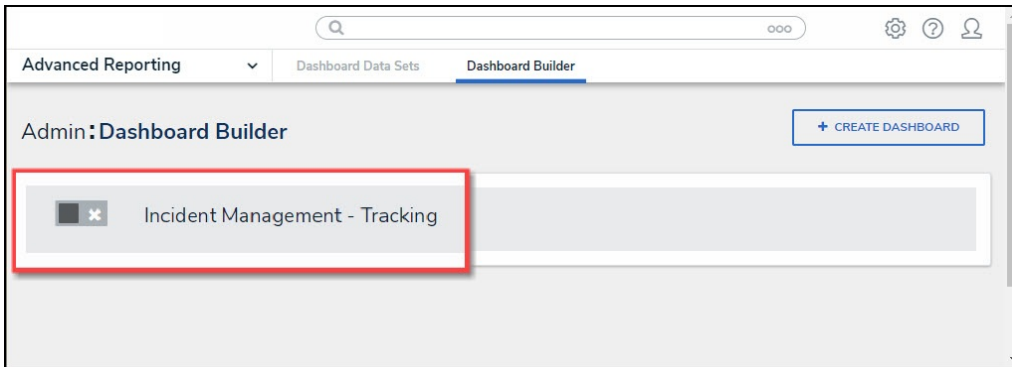
Administrator Settings Menu

3. From the **Admin Overview** screen, click on the **Dashboard Builder** tile under the **Views** section.



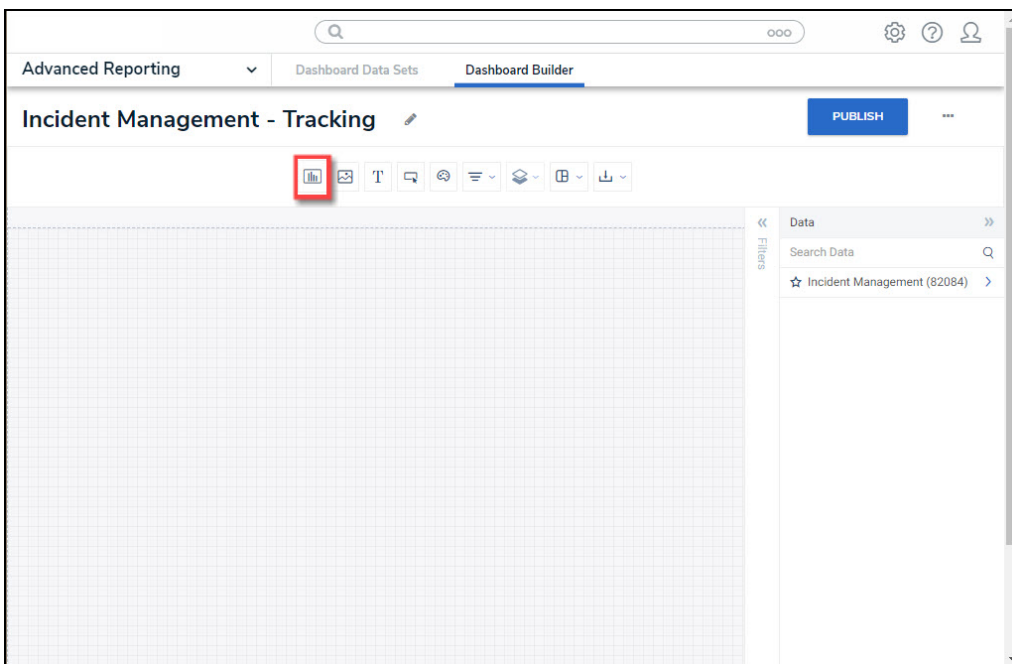
Dashboard Builder Tile

4. From the **Dashboard Builder** screen, click a **Dashboard Name**.



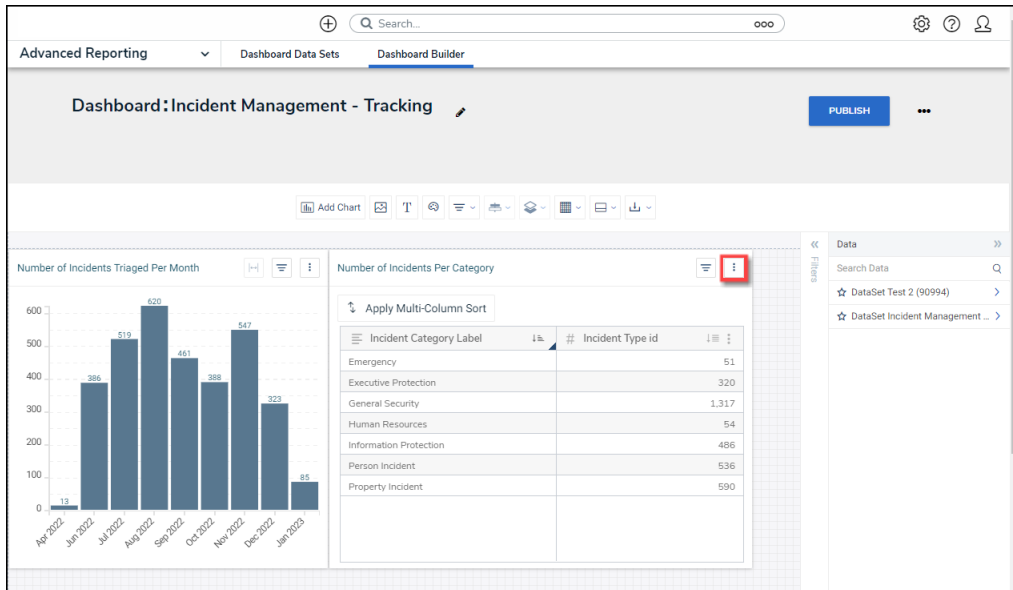
Dashboard Name

5. From the **Dashboard** screen, to access the **Chart** screen, click on the **Add Chart** button.



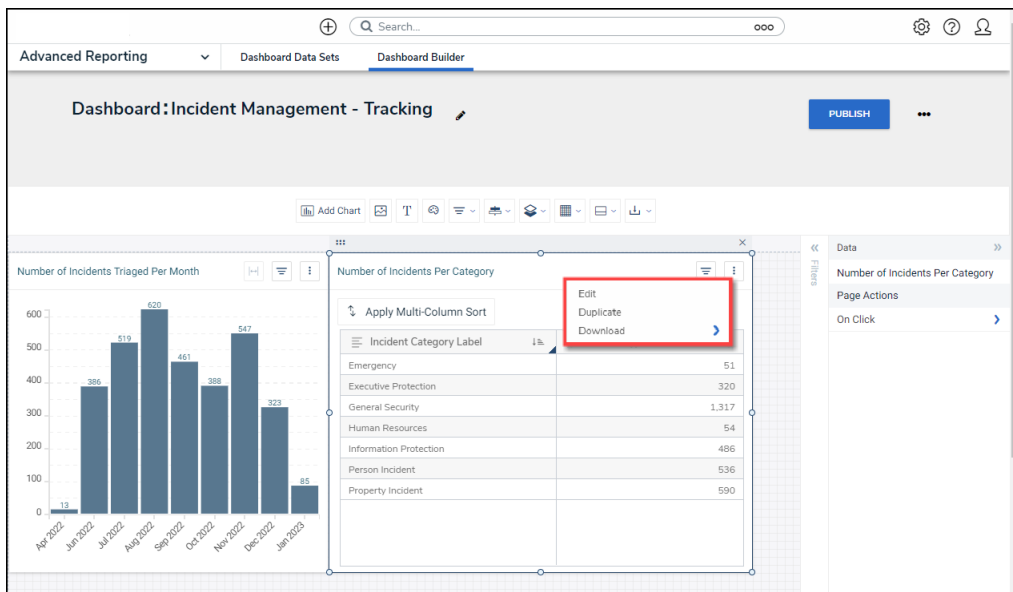
Add Chart Button

6. Or click the **More Options** icon on an existing **Chart View**.



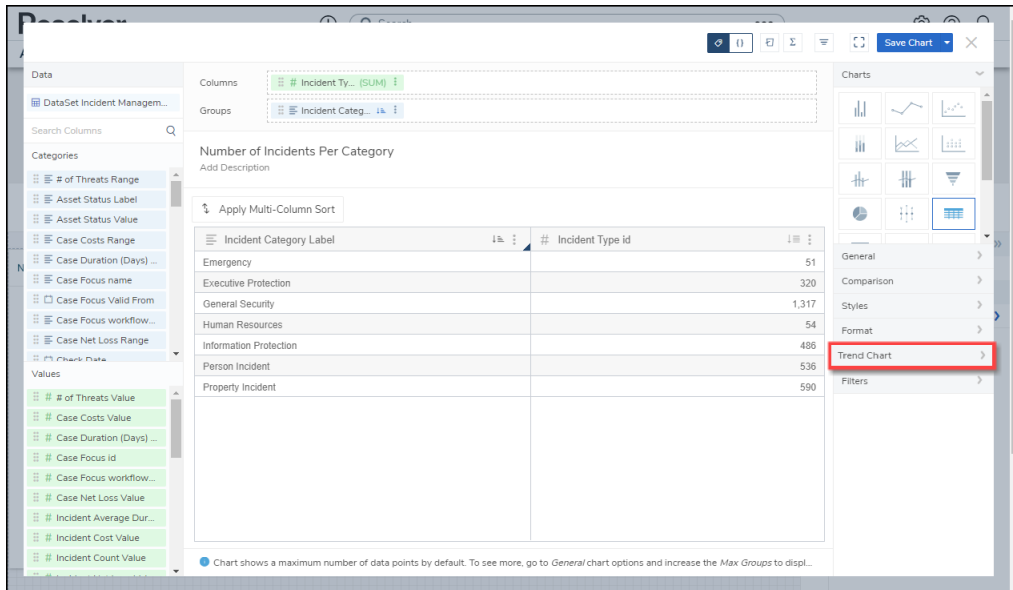
More Options Icon

7. Click the **Edit** option from the **More Options** dropdown menu.



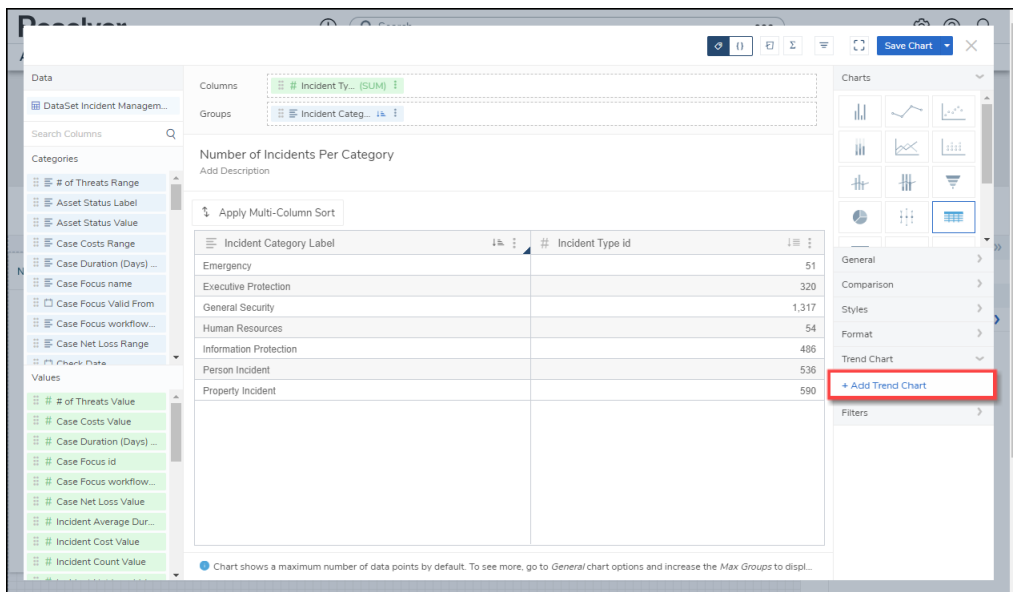
Edit Option

8. From the **Chart** screen, click the **Trend Chart** panel from the **Configuration** panel.



Trend Chart Panel

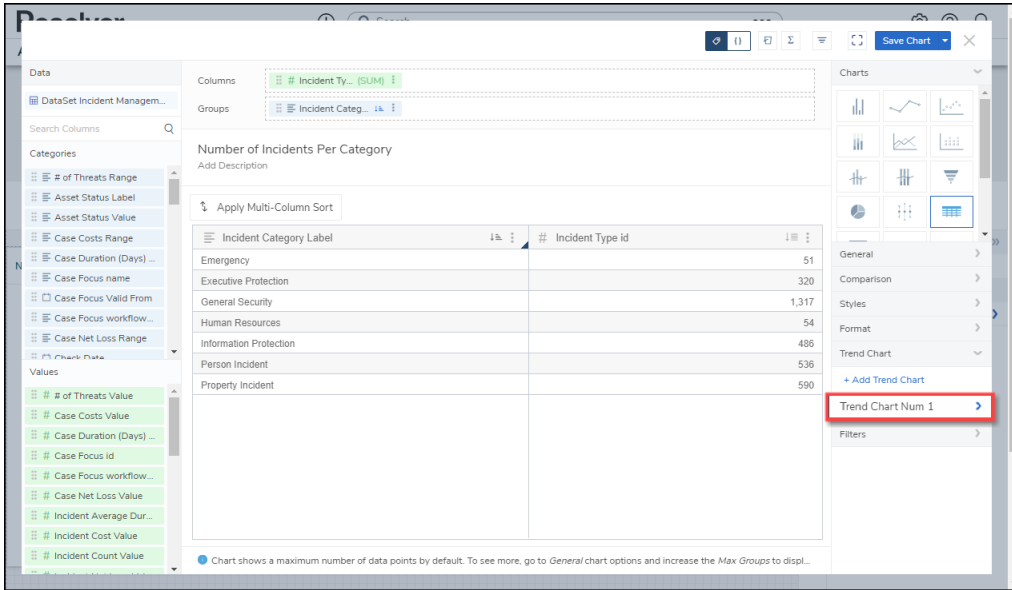
9. Click the **+Add Trend Chart** link.



+ Add Trend Chart Link

Adding a Trend Chart

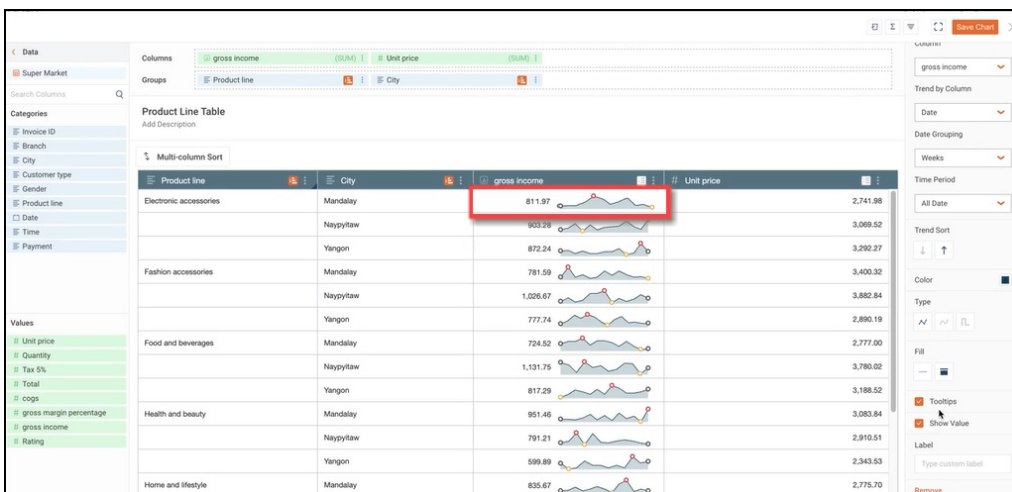
1. Click the **Trend Chart Num 1** link.



Trend Chart Num 1 Link

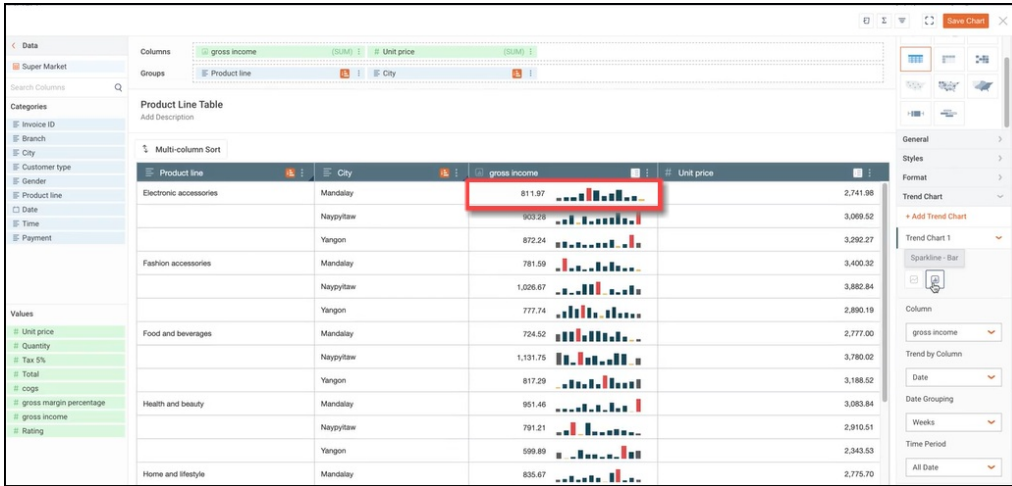
2. Select a **Trend Chart Type:**

- **Sparkline - Line:** The Sparkline - Line type applies a line to the Chart displaying data trends.



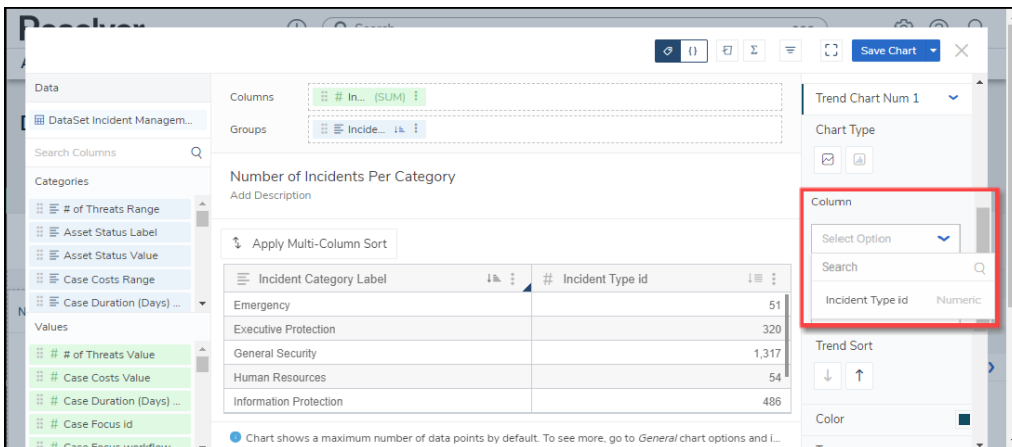
Sparkline - Line Type

- **Sparkline - Bar:** The Sparkline - Bar type applies a Bar graph to the Chart displaying data trends.



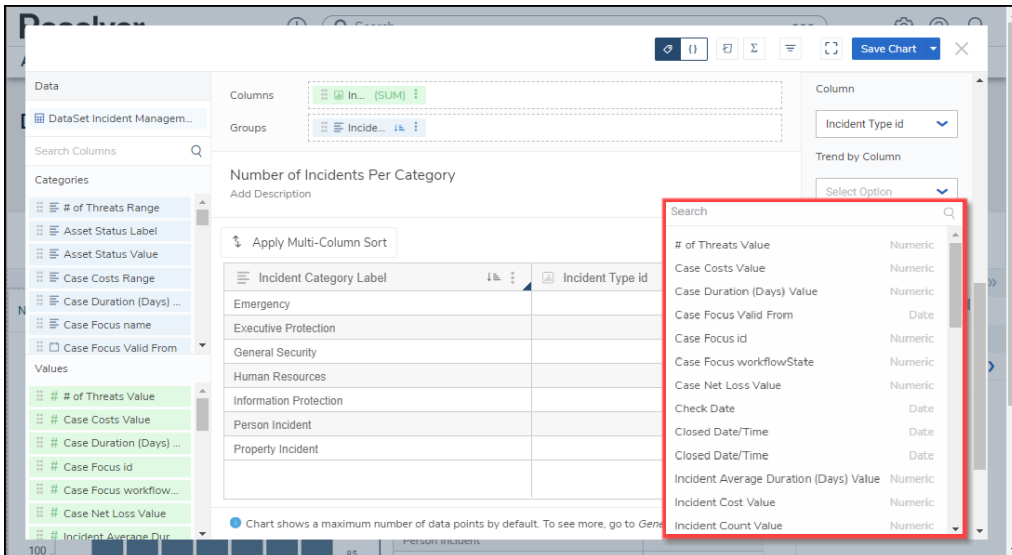
Sparkline - Bar Type

3. Select the Column displayed using the Sparkline from the **Column** dropdown menu. Only data Categories in the **Columns** field will appear on the **Columns** dropdown menu.



Column Dropdown Menu

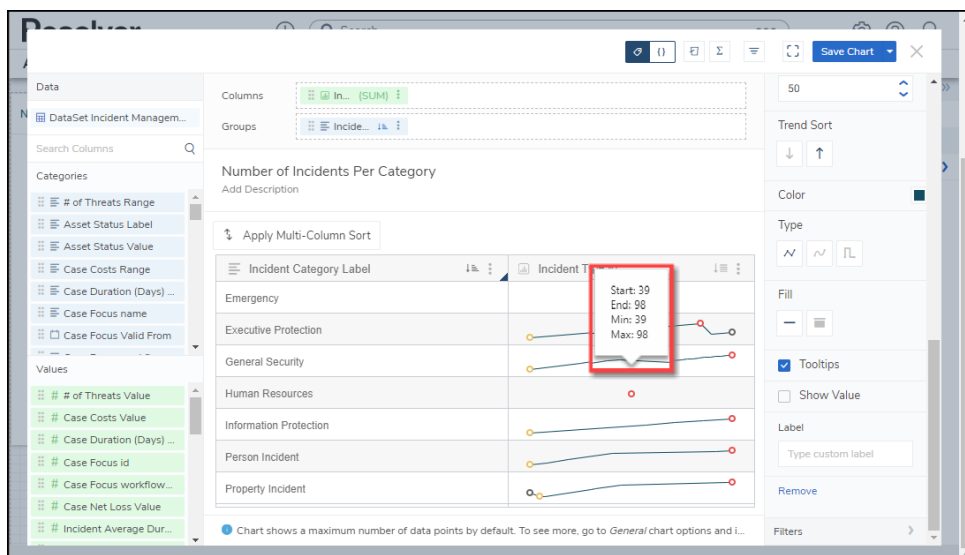
4. Select a data Column from the **Trend by Column** dropdown menu. The Column selected will be used to plot the Data Value coordinates like the x-axis. Only Numeric and Date Columns can be selected from the dropdown menu.



Trend by Column Dropdown Menu

• **Numeric or Date:**

- **Trend Sort:** The **Trend Sort** option allows users to sort the trending data in an **Ascending** (e.g., 0 - 10) or **Descending** (e.g., 10 - 0) order.
- **Color:** The **Color** option allows users to select the Sparkline's color.
- **Type:** The **Type** option only appears for Sparkline - Line types and allows the user to select the type of line used to represent the Sparkline (e.g., Line, Spline, Step). The **Type** changes the way an increase or decrease in Data looks.
- **Fill:** The **Fill** option only appears for Sparkline - Line types and allows users to select whether fill is used to highlight the area below the Sparkline (e.g., None or Below).
- **Tooltips:** The **Tooltips** checkbox allows a user to select whether to apply a Tooltip pop-up to the Chart to include Data Point Values (e.g., values include Start, Minimum, Maximum, and End).

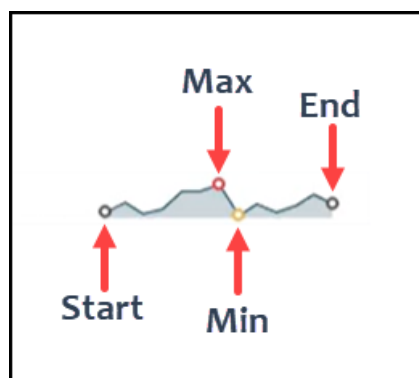


ToolTip

- **Show Value:** The **Show Value** option allows users to add the aggregated values before the Sparkline. If **Show Value** and **Label** are both selected and, the column is not wide enough to display values, only the **Label** value will be displayed.
 - **Label:** The **Label** option allows users to add a custom label that appears before the Sparkline. The Label will also be used to rename the Trend Chart. The new name will appear on the Configuration Panel instead of the default **Trend Chart Num 1.**
 - **Remove:** Click the **Remove** link to delete the Trend Chart.
- **Numeric Only:**
 - **Max Data Points:** Click the **Max Data Points** field and enter the number of Data Points you want to display on the Chart, or use the increase and decrease arrows to adjust the Max Data Points value. The **Max Data Points** field controls the number of Data Points that appear on the Chart Canvas. By default, the **Max Data Points** field is set to 50.
 - **Date Only:**
 - **Date Grouping:** The **Date Grouping** dropdown menu allows users to group data by selecting a period (e.g., year, quarter, months, etc.).
 - **Time Period:** The **Time Period** dropdown menu allows a user to select a period to pull the data from (e.g., this year, last year, this quarter, etc.).

5. The **Sparkline Data Points** are color-coded to indicate the following:

- **Gray** = Starting Data Point
- **Gray** = Ending Data Point
- **Yellow** = Minimum Data Point
- **Red** = Maximum Data Point



Sparkline Data Points Color Code

6. Click the **Save Chart** button to save all changes made to the Chart.