

Adding a Comparison to a Chart

Last Modified on 01/29/2025 4:45 pm EST

Overview

A Comparison Chart compares a selected value to one from a different period.

User Account Requirements

The user account you use to log into Resolver must have Administrator permission to add a Comparison to a Chart.

Related Information/Setup

To add styles to your Chart, please see the link below:

- [Adding Styles to a Chart](#)

Please see the corresponding articles below for Information on Adding a Chart Type not covered by these instructions.

- [Adding a Chart to a Dashboard](#)
 - [Adding a Multi-Series Chart to a Dashboard](#)
 - [Adding a Combo Chart to a Dashboard](#)
 - [Adding a Table to a Dashboard](#)
 - [Adding a Crosstab to a Dashboard](#)
 - [Adding a Heatmap to a Dashboard](#)
 - [Adding a Map to a Dashboard](#)
 - [Adding a Box and Whiskers Chart to a Dashboard](#)
-

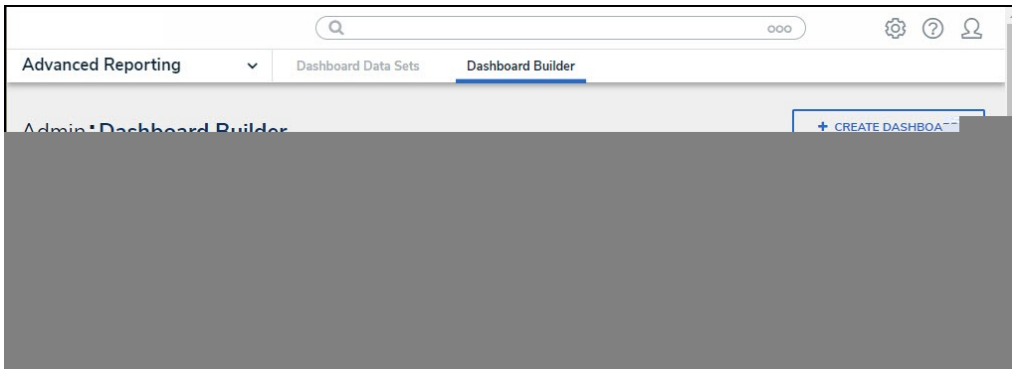
Navigation

1. From the **Home** screen, click the **Administration** icon.

" 2 + !& ' "

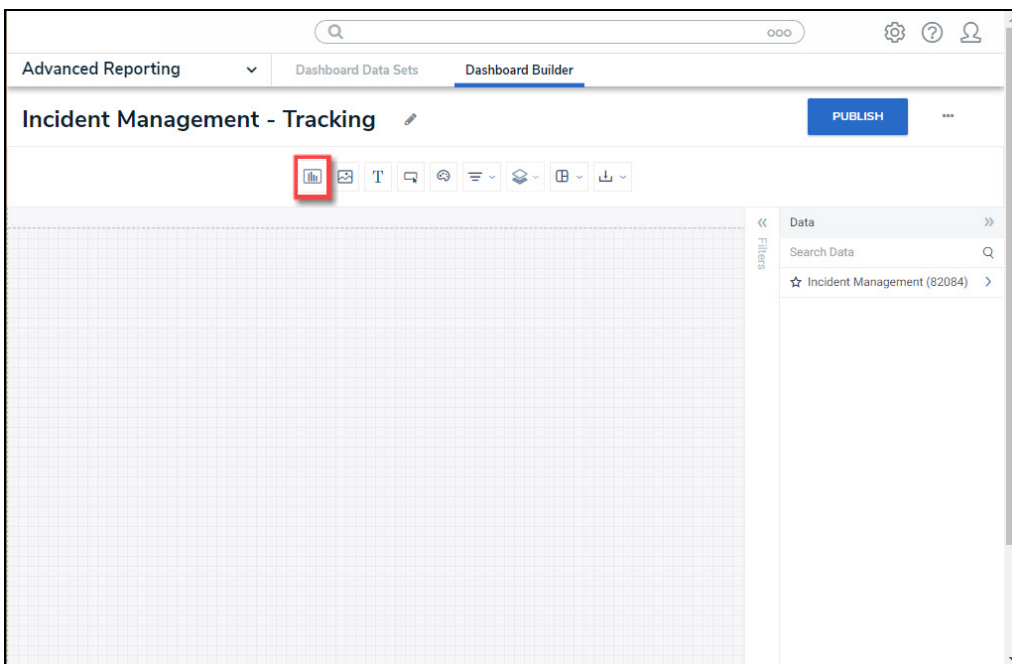
3" 2 \$! & ' ! " ! # "

, (// ! " & ' ! "



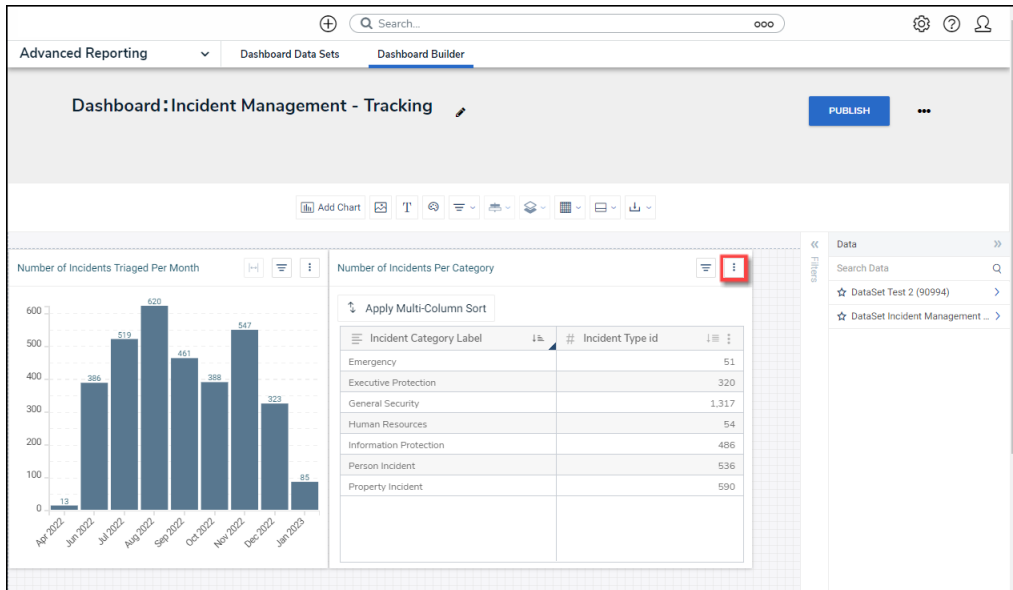
Dashboard Name

5. From the **Dashboard** screen, to access the **Chart** screen, click on the **Add Chart** button.



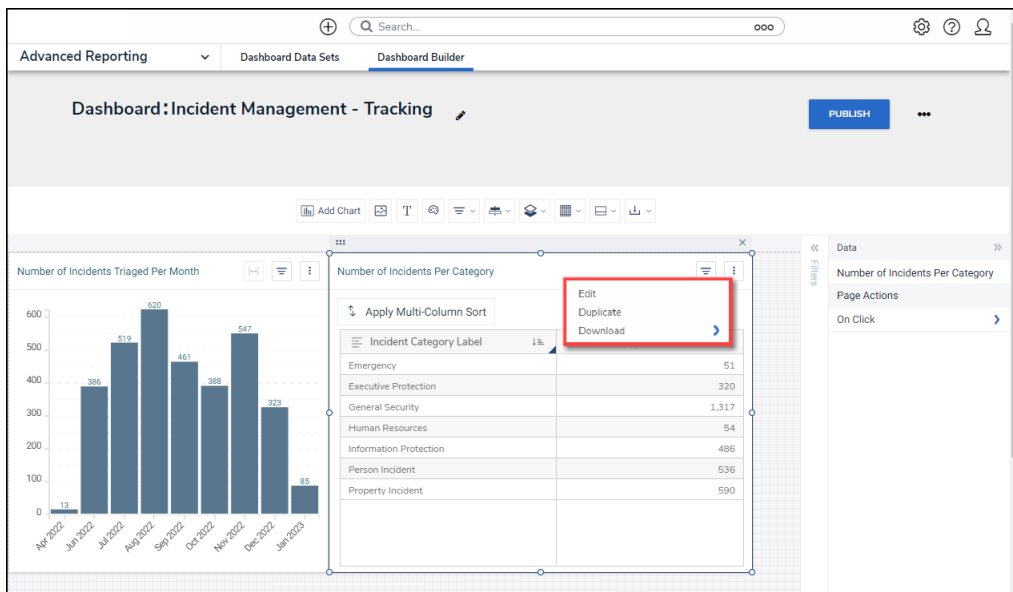
Add Chart Button

6. Or click the **More Options** icon on an existing **Chart View**.



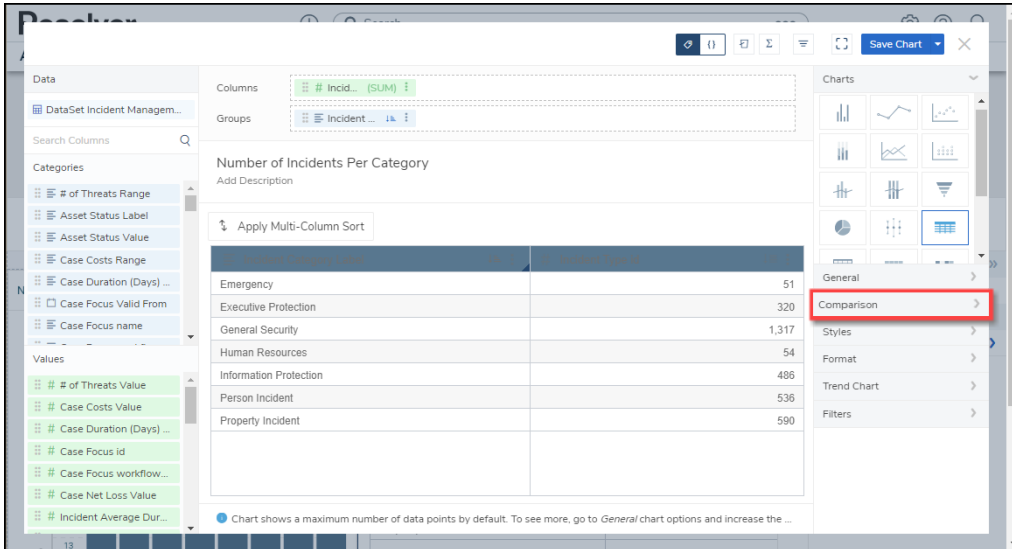
More Options Icon

7. Click the **Edit** option from the **More Options** dropdown menu.



Edit Option

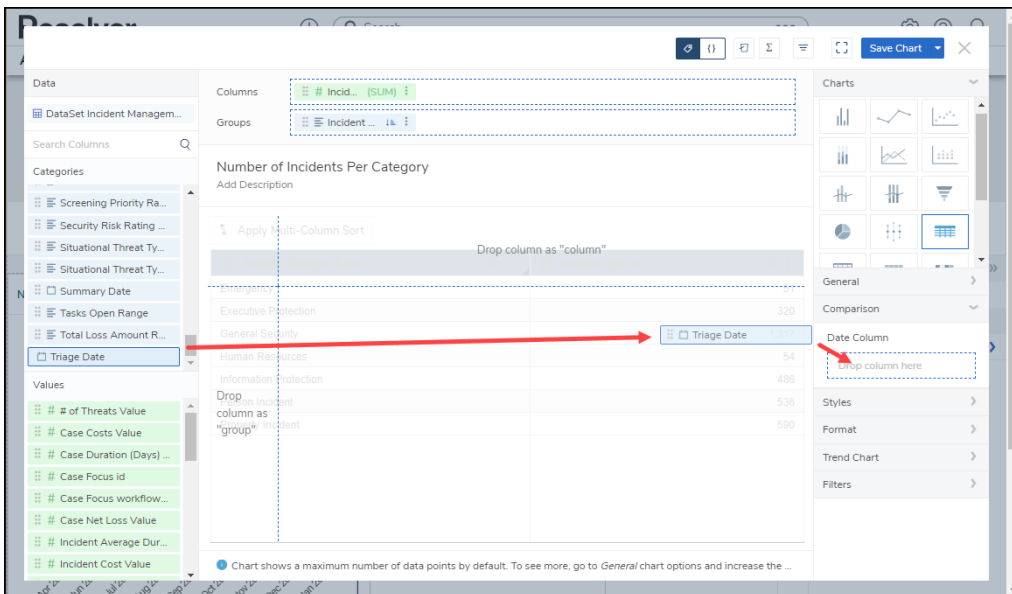
8. From the **Chart** screen, click the **Comparison** panel from the **Configuration** panel.



Trend Chart Panel

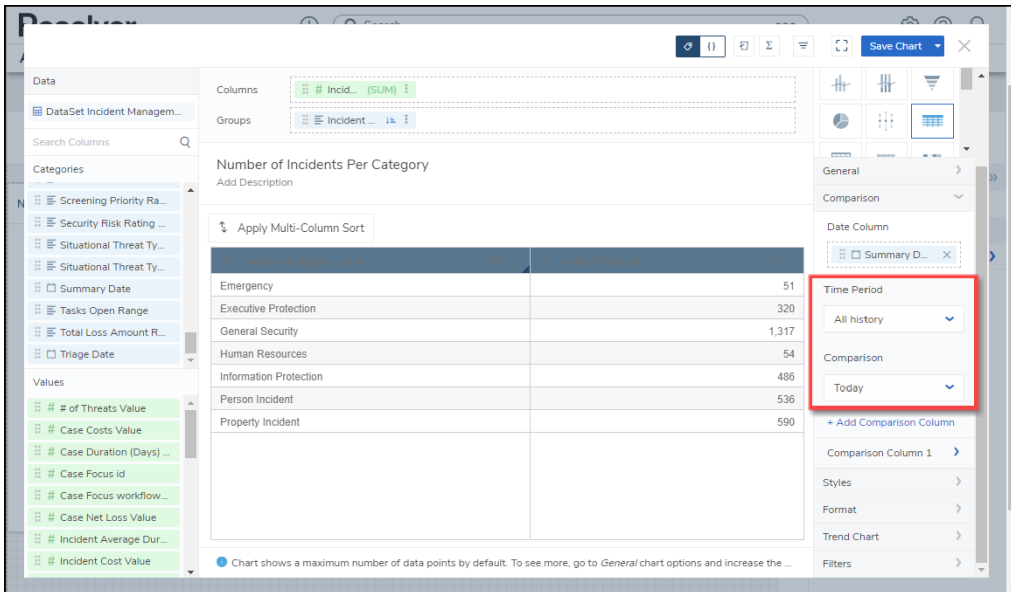
Adding a Comparison Chart

1. Drag and drop a **Category** from the **Categories** panel into the **Date Column** field.



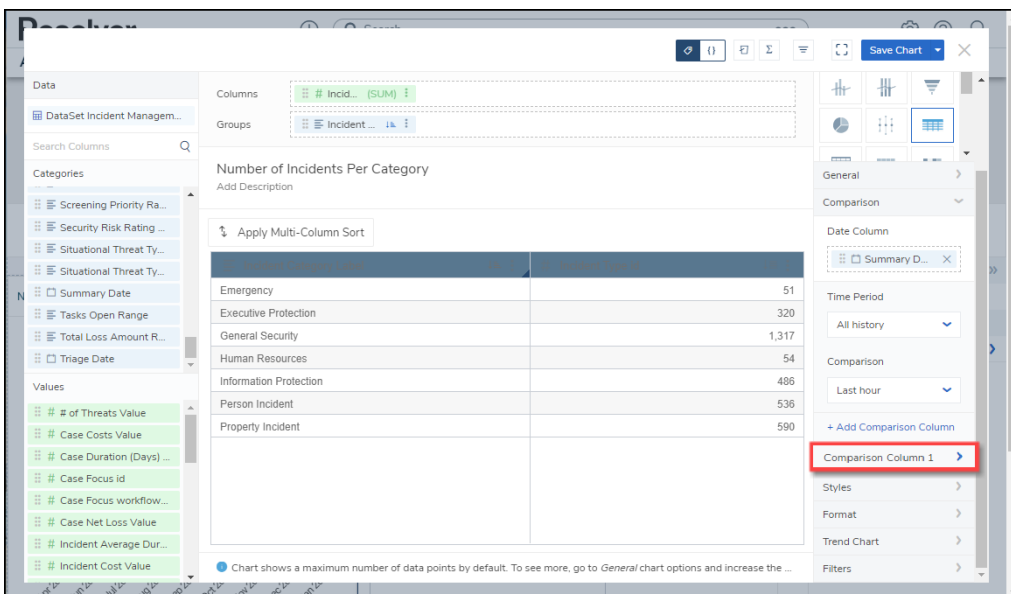
+ Add Trend Chart Link

2. Select the first period from the **Time Period** dropdown menu (e.g., All History, This Year, Last Hour, etc.).
3. Select the second period from the **Comparison** dropdown menu (e.g., All History, This Year, Last Hour, etc.). The data from the **Data Column** will use the periods selected in the **Time Period** and **Comparison** dropdown menu to compare the two values.



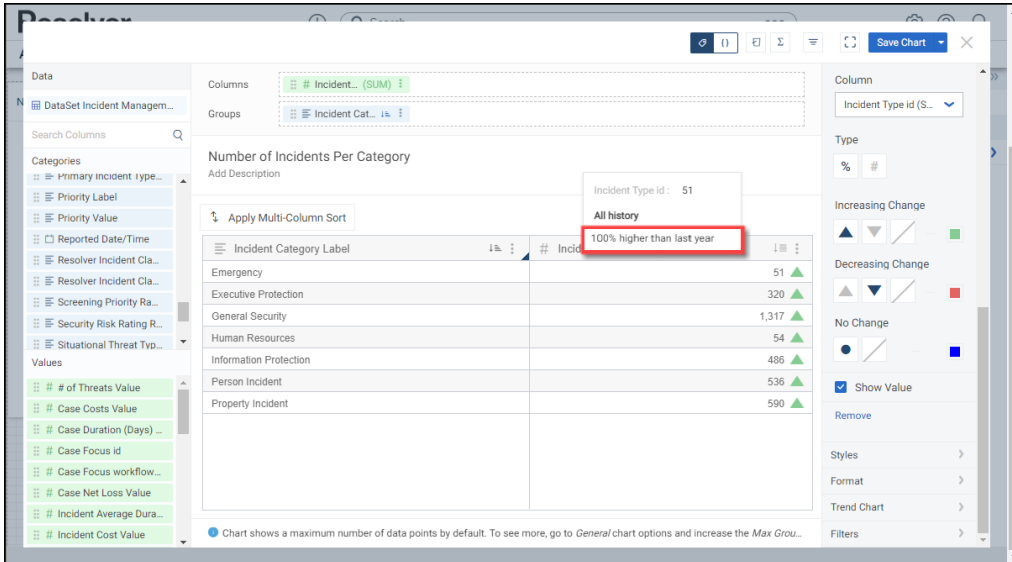
Time Period/Comparison Dropdowns

- Click the **+Add Comparison Column** link to add the Comparison Chart. The **Comparison Column 1** link will appear under the **+Add Comparison Column** link.



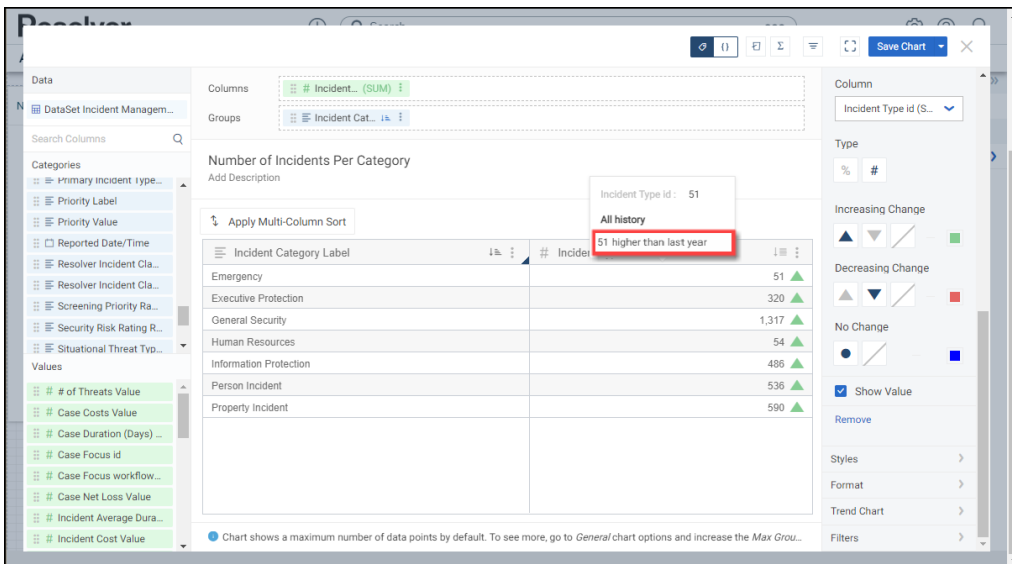
Comparison Column 1 Link

- Click the **Comparison Column 1** link, and the following fields will appear:
 - **Column:** Select the Column from the Column dropdown menu that the system will use for the comparison. Only the Comparison Columns you have added will appear on the dropdown menu.
 - **Type:** Select how the Comparison values are displayed on Chart Tooltips:
 - **Percent Change:** Shows the Comparison value using percentages.



Percent Change

- **Difference:** Shows the Comparison value using numerical values.



Difference

- **Increasing Change:** The **Increasing Change** field allows users to select the icon (Triangle Up, Triangle Down, or No Icon) and icon color (pick a color from the **Color Palette** pop-up) used to represent an increase in the Comparison value.
- **Decreasing Change:** The **Decreasing Change** field allows users to select the icon (Triangle Up, Triangle Down, or No Icon) and icon color (pick a color from the **Color Palette** pop-up) used to represent a decrease in the Comparison value.
- **No Change:** The **No Change** field allows users to select the icon (Circle or No Icon) and icon color (pick a color from the **Color Palette** pop-up) used to represent no change in the Comparison value.
- **Show Value:** The **Show Value** option includes or excludes the Comparison value on

the Chart.

- **Remove:** Select the **Remove** link to delete the Comparison Column from the Chart.

6. Click the **Save Chart** button to save changes made to the Chart.