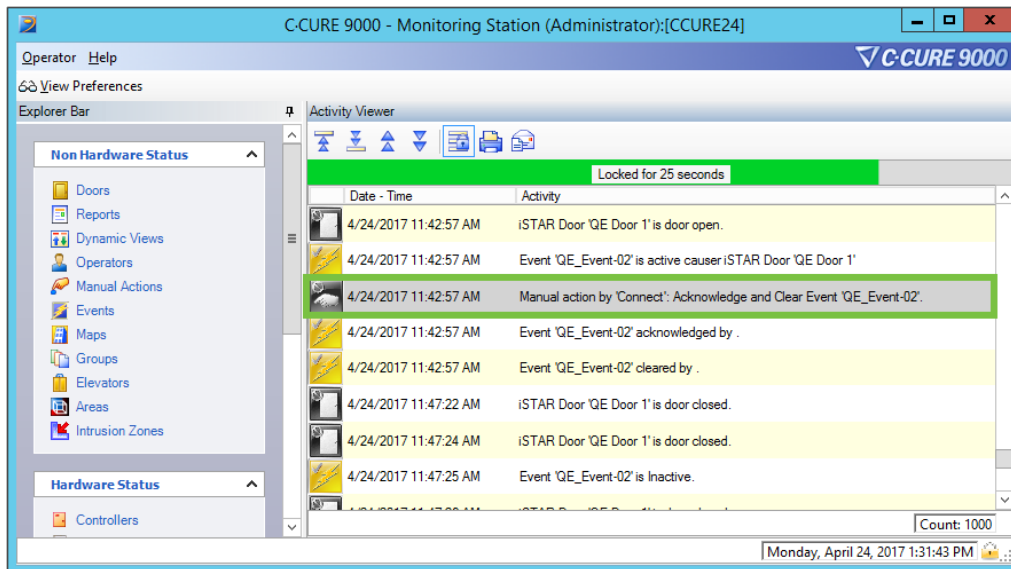


Monitor Connect Events in C-Cure

Last Modified on 10/27/2022 4:29 pm EDT

When an event is triggered and processed through Connect, the C-Cure Monitoring Station receives an acknowledge, clear, or an acknowledge and clear activity (depending on the event's rule settings in Connect).



C-Cure Monitoring Station

See the [Connect User's Guide](#) for more information on rules.